

Release Notes 2.71 Tuesday, May 18th, 2021

Howdy EasyClockers! Here are the notes for release 2.71. In this release, we extended the rounding rules to be configured in the pay class setting. Also, extended the questionnaire feature to work when clocking in by PC and we fixed an error in the ADP WFN integration. Kindly send us an email with your feedback to products@easyclocking.com. Stay tuned for upcoming updates.

New Features:

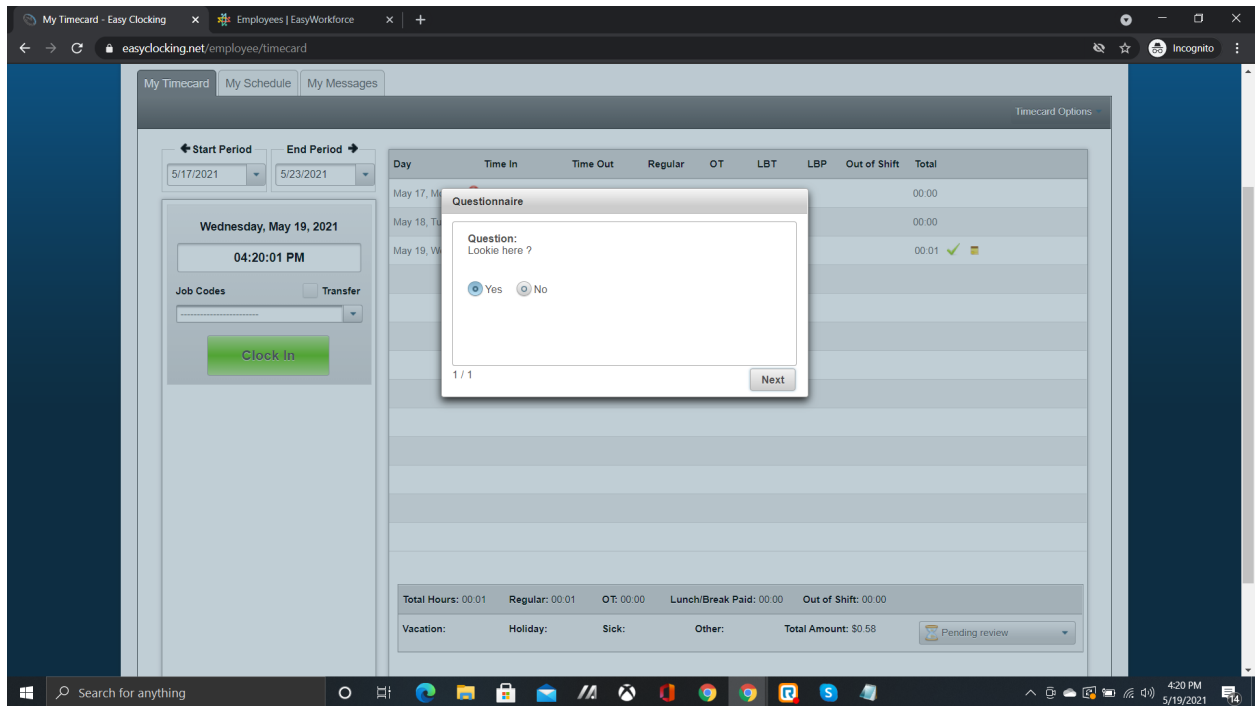
- **“Pay Class Settings” -Ability to configure the “Quarter Hour” or “Tenth Hour” rule by pay class:** We have extended this feature to be configured by pay class and not at the entire company level like it was before. By default, it will abide by the company rule but if desired you can change it to a quarter or tenth of an hour rule.

The screenshot displays the 'Pay Class' configuration interface. On the left, a sidebar lists various pay classes, with 'Regular' selected. The main panel shows the 'General' tab for the 'Regular' pay class. Key settings include: 'Pay Class Name' set to 'Regular', 'Period start time' at '12:00 AM', and 'Use Multi Rates Manager' unchecked. It asks for 'maximum continuous hours an employee can work in a shift' (16.00) and 'maximum continuous hours of Breaks an employee can take in a shift' (2.00). It also includes options for overnight work, calculation method (Shift Base selected), and cut time at pay period end. At the bottom, the 'Rounding Type' is highlighted in yellow and set to 'Tenth Hour 1/10'.

Enhancements/Add-ons:

1. **“Questionnaire” - Available now in Web PC or Clocking by PC:** The questionnaire feature available for our Xenio time clocks has been extended to also work when clocking in or out by PC. However, keep in mind this feature will only be available if you have a Xenio device. If you need assistance configuring the questionnaire feature, kindly contact

our technical support team.



Fixed Errors/Bugs:

1. **“ADP WFN Integration” - The “Select the timeclock menu level” option in the clocking permissions tab was reverting back:** The integration process with ADP WFN was causing this setting to revert back to the employee once changed to “Admin” or “Manager”. Only accounts integrated with ADP WFN were being affected.